



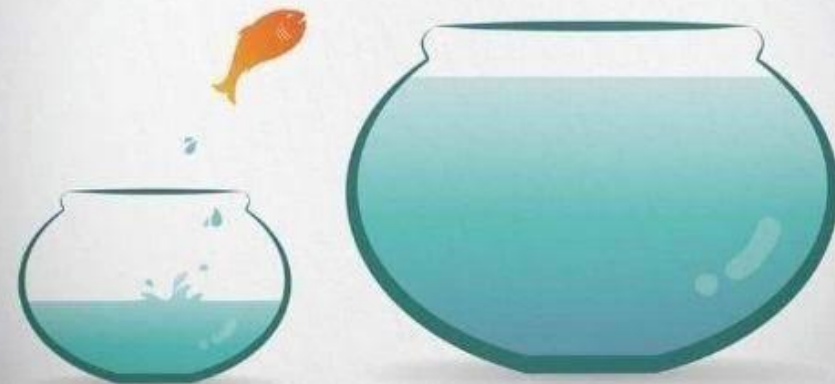
Change and Embracing the Future

Julie Fabsik-Swartz, MS, CFRE, CAP, CEAP

# Embracing Change

**Progress is impossible  
without change, and those  
who can't change their minds  
can't change anything.**

*-George Bernard Shaw*





# Strategic Planning at EAPA- Strategic Imperatives

[https://eapassn.org  
/page/stratplan](https://eapassn.org/page/stratplan)

Are We All  
Moving  
Together?

***“To move forward,  
everyone must row in the  
same direction at the same  
time. Otherwise, the boat  
goes around in a circle.”***

***-Julie Fabsik-Swarts***



---

# Educatio n

---

- What is it that our members need?
- How do deliver the education?
- What topics are relevant and meaningful?
- What partners can we leverage to provide the most cutting-edge programming?

What have we done?

- Inclusion of CEUs in our conference fees
- Continued Wednesday Wellness discussions
- Diversifying our course offerings in 2023
- Free Friday Webinars

# Free Friday Webinars 2023

---

<b>11/3/23</b>	<b>Burnout and the EAP</b>	<b>Erin O'Neil</b>
<b>11/17/23</b>	<b>Manfulness and Meditation for EAPs</b>	<b>Theresa Kulilowski-Gillespie</b>
<b>11/24/23</b>	<b>Thanksgiving Holiday</b>	<b>Gobble Gobble</b>
<b>12/1/22</b>	<b>Insurance Basics for the EAP</b>	<b>Christina McGowan</b>
<b>12/8/23</b>	<b>Leadership Perceptions for EAPs</b>	<b>Dr. Joel Bennett</b>



# Courses that occurred in 2023

---

- Leadership
- Cannabis Update
- Substance Abuse Training
- Extremism and Violence in the Workplace
- Working with Human Resources: An Operational Approach
- Mentoring for CEAP Candidates
- Elevating Ethical Awareness
- World Institute and EXPO





# Behind the Scenes at EAPA

- New Website
- New Customer Service Database
- New Learning Module System
- All coordinated under one company





# Partnerships and Advocacy

# Mental Health Liaison Group Membership



**MHLG** | MENTAL HEALTH LIAISON GROUP  
MENTAL HEALTH AND ADDICTION ADVOCATES  
ADVANCING POLICY, LEADING CHANGE

SEARCH

[ABOUT US](#) [MEMBERS](#) [CURRENT ISSUE STATEMENTS](#) [ARCHIVES](#) [CONTACT US](#)

## MEMBERS

### FULL MEMBERS

2020 Mom	Jed Foundation
American Association of Child and Adolescent Psychiatry	(The) Jewish Federations of North America
American Academy of Pediatrics	(The) Kennedy Forum
American Art Therapy Association	Legal Action Center
American Association for Geriatric Psychiatry	Maternal Mental Health Leadership Alliance
American Association for Marriage and Family Therapy	Mental Health America
American Association for Psychoanalysis in Clinical Social Work	(The) Michael J Fox Foundation for Parkinson's Research
American Association of Psychiatric Pharmacists	NAADAC, the Association for Addiction Professionals
American Association of Suicidology	National Alliance on Mental Illness
American Counseling Association	National Alliance to End Homelessness
American Dance Therapy Association	National Association for Children's Behavioral Health
American Foundation for Suicide Prevention	National Association for Rural Mental Health
American Group Psychotherapy Association	National Association for Behavioral Healthcare
American Hospital Association	National Association of County Behavioral Health and Developmental Disability Directors
American Mental Health Counselors Association	National Association of School Psychologists
American Nurses Association	National Association of Social Workers
American Occupational Therapy Association	National Association of State Alcohol & Drug Abuse Directors
American Psychiatric Association	National Association of State Mental Health Program Directors
American Psychiatric Nurses Association	National Board for Certified Counselors
American Psychoanalytic Association	National Council for Mental Wellbeing
American Psychological Association	National Disability Rights Network
American Society of Addiction Medicine	National Eating Disorders Association
Anxiety and Depression Association of America	National Federation of Families
Association for Ambulatory Behavioral Healthcare	National League for Nursing
Association for Behavioral Health and Wellness	National Register of Health Service Psychologists

# Partnerships with other mental health associations

- National Behavior Consortium
- NAADAC
- National Association of Social Workers
- Society of Human Resource Management
- National Association of Addiction Treatment Providers
- American Association of Colleges of Nursing
- Council on Social Work Education
- National Association of Recovery Residences
- Mental Health America
- National Association for Behavioral Healthcare
- American Psychiatric Association Foundation
- American Foundation for Suicide Prevention
- Journal of Workplace Behavior Health
- EA Round Table
- Behavioral Health Association Providers

# Campaign for Disability Employment



Enter search terms...



ABOUT  
THE CDE

PSA  
CAMPAIGNS

JOIN THE  
MOVEMENT

STAY  
CONNECTED

CELEBRATE  
NDEAM

WHERE TO  
LEARN MORE

ESPAÑOL

## The “Mental Health at Work: What Can I Do” PSA Campaign



*All of us have a role to play in promoting a mental health friendly workplace.* That's the message behind the “Mental Health at Work: What Can I Do?” PSA.

This timely PSA features the faces and voices of four cast members including a CEO, a manager, a co-worker and a person who identifies as having a mental health condition. All of them discuss what they can do to promote workplace wellbeing, from setting the tone for an inclusive workplace, to providing and requesting assistance and accommodations, to being a source of support to peers and colleagues. Their experiences remind us that we all benefit from flexible, supportive workplaces that promote good mental health.

This online toolkit features a range of integrated materials to help you or your organization support the message of the “Mental Health at Work: What Can I Do?” PSA.



# Employee Assistance Resource Network Leadership Council



[About EARN](#) [Getting Started](#) [Learning Center](#) [News & Events](#) [Contact Us](#)

## EARN Partners

EARN's partners are dedicated to advancing workplace disability inclusion.

[About EARN](#)

The [K. Lisa Yang Hock E. Tan Institute on Employment & Disability](#) at Cornell University works collaboratively with the following partners to manage the activities of EARN.

### Collaborative Partners

Concets Communications

### In This Section

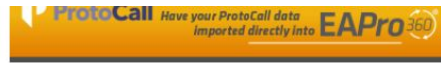
[EARN Partners](#)

[EARN Staff](#)

[FAQs](#)

Related Content

# Moving the CEAP into the future



- ABOUT
- MEMBERSHIP
- CHAPTERS / BRANCHES
- CONFERENCES / EDUCATION
- CREDENTIALS
- DIRECTORIES
- PUBLICATIONS / RESOURCES

## CEAP<sup>®</sup> Certification Information

### Initial CEAP Certification

**Initial Certification under the NEW CEAP Refresh Process Effective November 2021:**

- [CEAP Refresh Homepage](#)
- [CEAP Refresh Candidate Information](#)
- [Start the CEAP Refresh Process!](#)
- [CEAP Refresh FAQs](#)

### CEAP Recertification

**CEAP Recertification is due every three years.** You may recertify by **PDHs** (60 Hours of Continuing Education, either PDH approved or relevant CEUs, earned within your CEAP Certification period) or by taking the new **Online CEAP Learning Modules**.

[Click Here for more information.](#) Extenuating circumstances? Contact [certification@eapassn.org](mailto:certification@eapassn.org)

### CEAP Reinstatement and Inactive Status

**CEAP Reinstatement applies if your CEAP has lapsed for a period of time.**

DONATE TODAY!

CAREER CENTRAL

### EVENTS



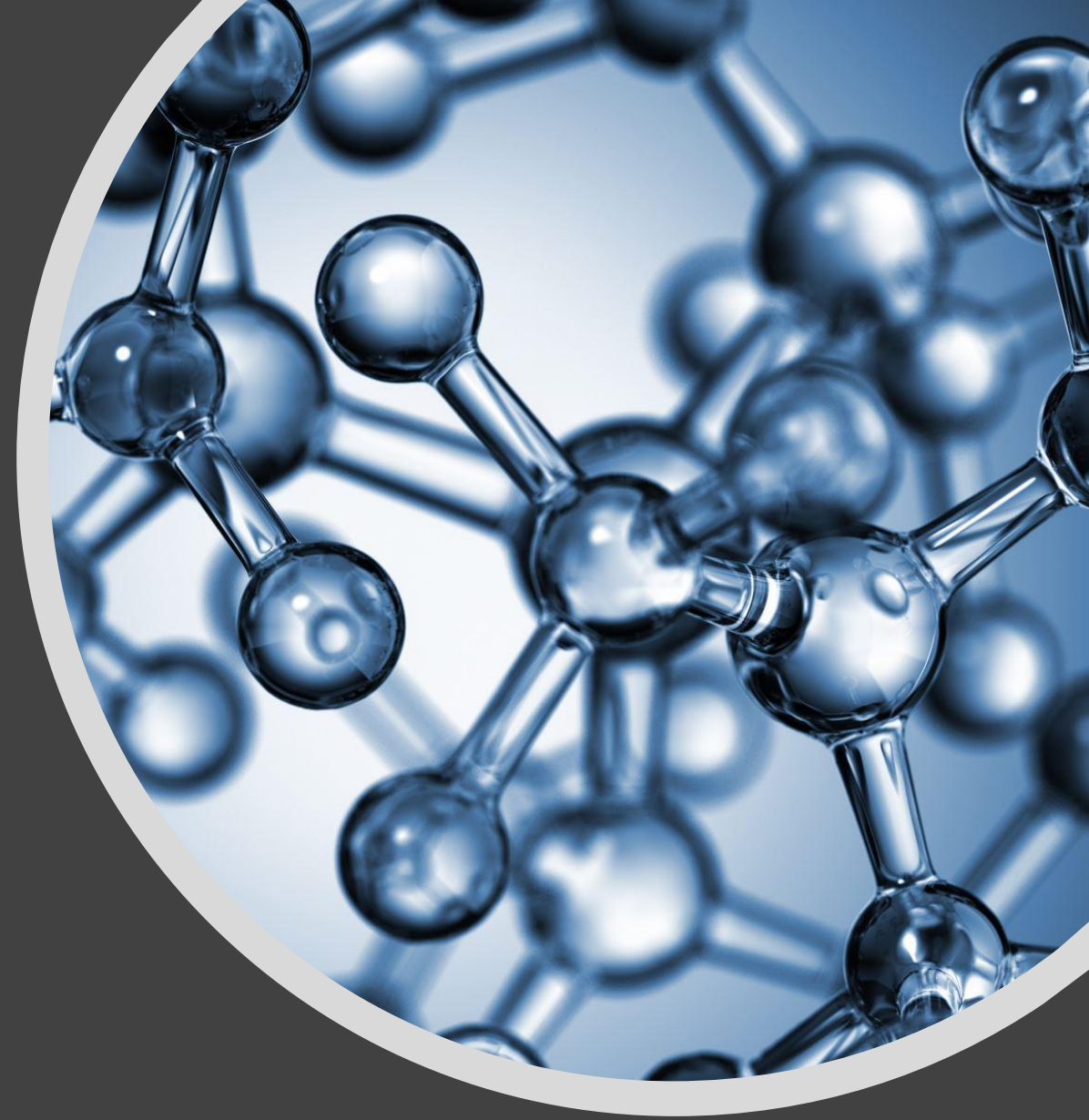
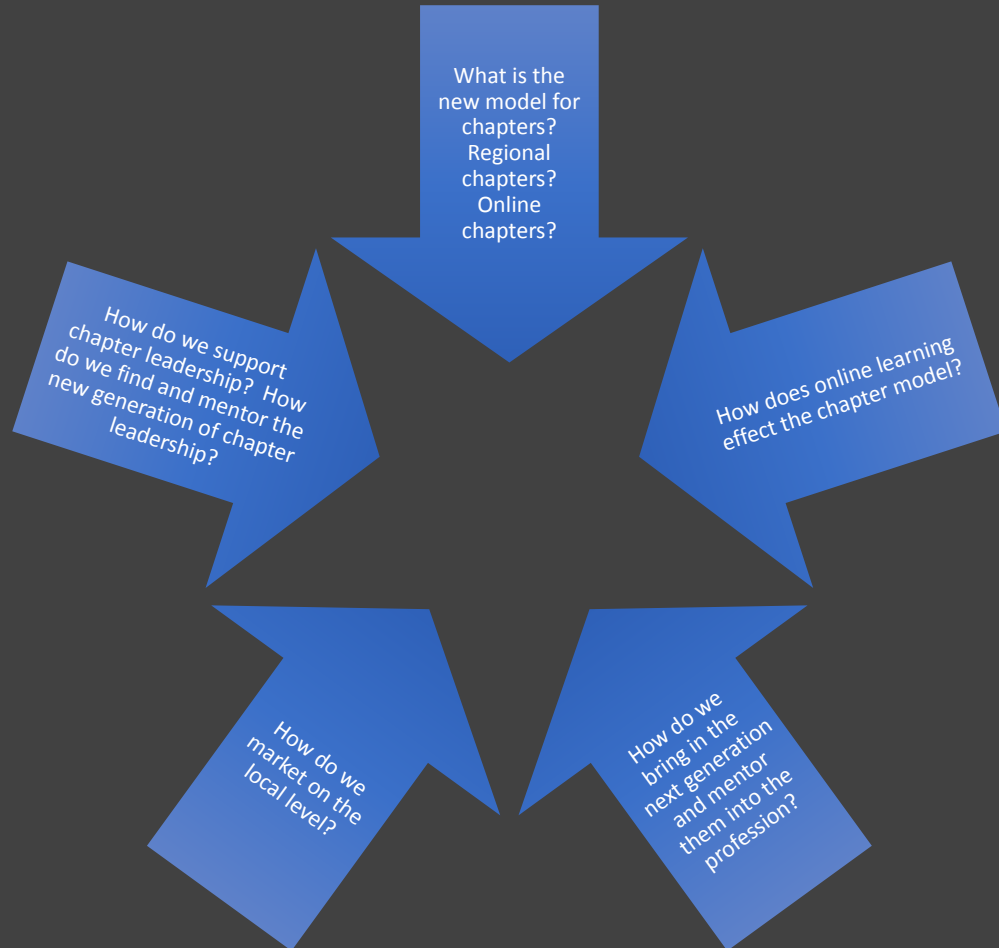
All Upcoming Events

Virtual Advanced SAP Symposium, Quarterly

Virtual New CEAP Mentoring Sessions, Biweekly

# Chapter Support

## Embracing how we do business





# Memberships

## Organizational Membership

- EAPA can now support organizational membership
- To date, we have 22 companies in this categories

## Overall Membership

- EAPA is growing for the first time in a decade
- Bringing on the next generation
- Expanding Internationally



THANK YOU



Questions?